

NANRIC

Your Source for Equine Podiatry Products & Knowledge

www.nanric.com

1-877-462-6742



Welcome to **NANRIC**. As you look through our new catalog, we hope you find a collection of podiatry-based products that will make life easier for you; whether you are a veterinarian, farrier, trainer or owner. Make sure to look for our ***New*** products in red.

If you are a new customer, we are delighted that you have found us. We encourage you to look through this catalog and explore the products we have to offer. Give us a call if you have any questions, we will be happy to help you any way we can.

For those of you who are regular customers, we appreciate your business each and every day. Your continuous support helps our company grow and motivates us to continue to go the extra mile.

Even though **NANRIC** is growing, please know that one thing has not changed. We still take pride in offering you high-quality products and the knowledge you need to use them, coupled with excellent customer service.

Enjoy this new catalog. If you find that you have questions or want to place an order, please give us a call toll-free at 877-462-6742 or send us an email at sales@nanric.com.

Wishing you a safe and prosperous year!

  
 Nancy Redden Shannon Redden Zack Gaines

The Staff at **NANRIC**
 Your Source for Equine Podiatry Products & Knowledge - www.nanric.com

Contents	
Aluminum Shoes *New*	3
Steel Shoes	10
Equilox, Mega Bond, & Accessories *New*	12
Quarter Crack Repair & Hoof Boss	15
Vettec Products & Accessories	16
ProSoft, Foot Mold Kit	19
NANRIC Ultimates and ACS	20
NANRIC Mega Ultimates *New*	22
DALRIC & NANRIC Foal Shoes	24
Redden Consultation Service	27
X-Ray Blocks and Accessories	28
Educational Materials	32
Hoof Care and Medical Products *New*	34
Tools, Aprons, & Equipment *New*	40
Biotin, Biotin Bites, & Surge *New*	52

Four Point Aluminum Shoes

The Rail Shoe

The Rail Shoe is a versatile shoe designed to enhance the healing environment. In addition, the mechanics can be greatly enhanced by forging it with various levels of rocker action (starting at the heel and working forward). The degree of mechanics required is relevant to the degree of soft tissue and bone pathology and hoof distortion.

To achieve the optimum level of mechanics much consideration must precede trimming, forging and application. Low beam lateral and DP views are extremely helpful for farriers and veterinarians as they discuss and design a shoeing protocol that adequately reduces the tension of the DDFT and its direct influence on major suspension and support components.

The self adjusting PA range of 6 to 20 degrees can offer tremendous pain relief and medical benefits for low to mid scale chronic laminitis (months to years

since onset), white line disease, toe cracks, navicular syndrome and other problems affected by the direct influence of the deep flexor muscle and tendon.



RAIL0	4 1/8W x 4 3/4L	\$29.80/each
RAIL1	4 5/16W x 5L	\$29.80/each
RAIL2	4 9/16W x 5 1/8L	\$29.80/each
RAIL3	4 3/4W x 5 1/4L	\$31.70/each
RAIL4	5W x 5 1/2L	\$34.65/each
RAIL5	5 3/8W x 6L	\$38.35/each
RAIL6	5 5/8W x 6 1/4L	\$51.15/each
RAIL6.5	5 3/4W x 6 5/8L	\$51.15/each
RAIL7	6 W x 7L	\$57.25/each

The Drop Forge Rail Shoe

The Aluminum Four Point Drop Forge Rail Shoe is a slightly modified version of our milled Rail Shoe. It is currently available in sizes 2-5.

DRAIL2	4 9/16W x 5 1/8L	\$21.20/each
DRAIL3	4 3/4W x 5 1/4L	\$21.20/each
DRAIL4	5W x 5 1/2L	\$21.20/each
DRAIL5	5 3/8W x 6L	\$21.20/each

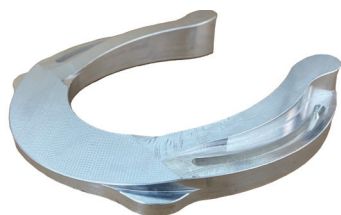




The Hind Rail Shoe

This shoe greatly reduces deep digital flexor tension, therefore reducing the internal load on the heel. The enhanced breakover and rail shift the

load to the more stable toe area and offer less strenuous medial-lateral breakover.



HRAIL3	4 3/4W x 4 7/8L	\$31.70/each
HRAIL4	5W x 5 3/8L	\$34.65/each
HRAIL5	5 3/16W x 5 15/16L	\$38.35/each
HRAIL6	5 5/16W x 6 1/4L	\$48.24/each

The Tenotomy Railbar Shoe

The deep digital flexor tendon (DDFT) tenotomy is a viable option for treating multiple stages of mid- to high-scale laminitis. When the decision is made to cut the DDFT, it is imperative that the palmar surface of PIII is properly realigned (derotated) immediately prior to surgery. This realignment/derotation compliments the surgery and significantly increases the likelihood of a positive outcome.



For years, Dr. Redden used a rail shoe to facilitate derotation of the palmar surface of PIII. He used Advance Cushion Support to achieve the proper positioning and then glued the rail shoe in place with EquiloX®. The Tenotomy Railbar shoe has the same design as the original Rail shoe, but it offers a heel extensor on the back of the shoe to prevent unwarranted and unexpected hyper-extension (toe lift) following DDFT surgery.

This shoe is a valuable time-saver for farriers and vets. However, if you prefer to fabricate your own Tenotomy Railbar shoe, we now offer a T-Rail Insert in 3 sizes that can be welded into our Rail shoe. Size 2 for (Rail2, 3N, 4N) Size 3 for (Rail3, 4, 5) and Size 6 for (Rail 6, 6.5, 7).

TRAIL2	4 9/16W x 5 7/8L	\$62.35/each
TRAIL3	4 13/16W x 6L	\$64.80/each
TRAIL4	5 1/16W x 6 5/8L	\$72.30/each
TRAIL5	5 3/8W x 6 7/8L	\$76.65/each
TRAIL INSERT	Sizes 2, 3, 6 - 3/8"	\$6.85/each



The Narrow Rail Shoe

This shoe is a narrow version of the original rail to better suit long narrow feet.

RAIL2N	4 5/16W x 5 1/8L	\$29.80/each
RAIL3N	4 1/2W x 5 1/4L	\$31.70/each
RAIL4N	4 3/4W x 5 5/8L	\$34.65/each
RAIL5N	5W x 5 15/16L	\$38.35/each



The Buttress Eggbar Shoe

The Buttress Eggbar with Toe Insert can be used with or without a Buttress Wedge. This shoe is designed for horses with a negative PA (Palmar Angle) and crushed heels.

Available in Front and Hind Patterns and in 8 and 10 mm thickness. Sizes 1-3.



Front	BEF1	4 3/4W x 5 1/4L	\$20.90/each
	BEF2	4 7/8W x 5 7/16L	\$20.90/each
	BEF3	5 1/8W x 5 13/16L	\$22.90/each
Hind	BEH1	4 1/2W x 5 1/8L	\$20.90/each
	BEH2	4 5/8W x 5 1/4L	\$20.90/each
	BEH3	4 3/4W x 5 9/16L	\$22.90/each

NANRIC Buttress Wedge

The **NANRIC** Buttress Wedge was designed to support the flexible buttress and not wedge the heel. This works great for horses with a negative PA and 15 - 20 mm of sole under the apex.

Note: Horses must have adequate sole to properly use the Buttress Wedge. You may wish to use a Full Rocker or Rocker Rail Shoe as the initial shoe to quickly gain sole mass and then apply the Buttress Eggbar with the Buttress Wedge.

All Sizes \$20/pair

1/2" Wedge	3L x 5.5W
3/4" Wedge	3L x 5.5W
5/8" Wedge	3L x 5.5W
7/8" Wedge	2.5L x 5.5W
15/16" Wedge	2.5L x 5.5W
1" Wedge	2.5L x 5.5W





The Drop Forge Mega Full Rocker Shoe

The Drop Forge Full Rocker Shoe - E Series or "Mega Rocker" has been requested by numerous vets and farriers that have become real efficient using high level mechanics to enhance the healing environment. This is a rehab shoe and not recommended to be used on training or competing horses due to the high level of mechanics. The manufactured "rocker" on the ground surface of this shoe provides high-level mechanics and it allows the horse to self-adjust his palmar angle, which enhances the perfusion of the foot and sole growth.



The ground surface is rockered with a high (E) radius. Put on flat with a zero PA it can offer 18 to 20 degree PA. When there is adequate foot mass to allow adding more mechanics, rocker the heel and very slightly at the toe. The shoe can then offer up to a 25 degree PA and not be bottomed out at the toe. Available in 3 drop forge sizes and 2 milled sizes.

DFR2E *New*	4 1/5W x 5 1/8L	\$25.00/each
DFR3E	4 7/8W x 5 1/2L	\$25.00/each
DFR4E	5 1/8W x 5 3/4L	\$25.00/each
DFR5E	5 3/8W x 6 1/8L	\$25.00/each
FR6E	5 3/4W x 6 1/2L	\$50.00/each
FR6CE	6 1/4W x 6 1/2L	\$50.00/each

The Drop Forge Full Rocker Shoe

The Drop Forge Full Rocker Shoe is designed to offer high-end mechanical breakover. The point of breakover or pivot point is very unique as it offers the farrier a reliable means of placing breakover directly below the center of articulation. This point is located just forward of the widest point of the foot on the steeper profile foot and slightly behind the widest point on the low heel. The mechanical benefits can be greatly enhanced by forging various levels of rocker action (starting at the heel and working forward). The rocker action must always be focused toward the toe never the heel, therefore the technique sensitive aspect of this concept. **Radiographs are the key to getting it right.** Relieving



downward load on the sole corium enhances rapid sole growth and is directly proportional to DDFT tension decrease. A great alternative for thin soles. Available in 7 sizes prepunched but not drilled. The DFR4SC could be described as a size 4 1/2.

DFR1CC	4 1/2W x 4 9/16L	\$14.00/each
DFR2CC	4 13/16W x 4 15/16L	\$14.00/each
DFR3CC	5 1/16W x 5 1/4L	\$14.00/each
DFR4CC	5 3/8W x 5 3/8L	\$14.00/each
DFR4SC	5 7/16W x 5 5/8L	\$14.00/each
DFR5CC	5 11/16W x 5 15/16L	\$14.00/each
DFR6CC	6 1/16W x 6 1/16L	\$16.00/each

Quality Matters! NANRIC makes the entire aluminum shoe line out of 6061-T6 Aluminum. 6061 aluminum plate is known for its superior formability, weldability and corrosion resistance. These qualities give 6061 aluminum plate its excellent machinability and high strength.

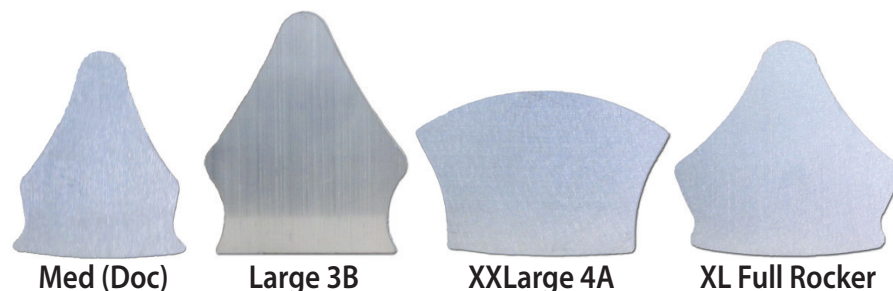
Aluminum Inserts

These inserts are designed to be welded into our aluminum shoes for frog support and positive frog and buttress pressure.



Mega *New*	Fits Sizes 2 - 6	\$6.30/each
Small 1C	Fits Rail 0 - 2	\$6.85/each
T-Rail	Sizes 2, 3, 6 - 3/8"	\$6.85/each
Medium (Dan)*	Fits Rail 3 & 4	\$6.85/each

Made of 3/8" aluminum and available in 8 sizes. *1/4" thick in select sizes - \$6.30.

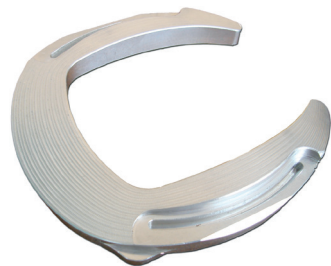


Medium (Doc)*	Fits Rail 3 & 4	\$6.85/each
Large*	Fits Rail 5 - 7	\$6.85/each
XL Full Rocker	Fits Full Rocker 1-4	\$6.85/each
XXLarge	Fits Rail & Full Rocker	\$6.85/each



The Full Rocker Shoe

The Full Rocker Shoe, or "banana shoe" is our original Full Rocker Shoe milled from 6061-T6 aluminum. It is designed to offer high-end mechanical breakover. The breakover or pivot is unique as it offers optimum mechanics in the same fashion as the drop forge full rocker. The shoe is creased but not punched and is available in 6 sizes. The size FR4SC could be described as a size 4 1/2. *See our Drop Forge version on page 7.



FR1CC	4 1/2W x 4 9/16L	\$39.15/each
FR2CC	4 13/16W x 4 15/16L	\$39.15/each
FR3CC	5 1/16W x 5 1/4L	\$39.15/each
FR4CC	5 3/8W x 5 3/8L	\$43.35/each
FR5CC	5 11/16W x 5 15/16L	\$43.35/each

How are NANRIC shoes sized?

NANRIC aluminum shoes are sized based on the width and length of the horse's foot. The most important measurement is the width at the widest point. Our sizes do not correspond with other brands as we prefer to fit the foot. **Note:** All our aluminum shoes are sold each instead of pair allowing you to purchase only one size or to mix and match sizes.

The Narrow Full Rocker Shoe with Insert

This shoe is the narrow version of the Full Rocker Shoe. It is made for the more long and narrow foot. This shoe can also double as a hind pattern shoe and has a steel insert in the toe for added strength and extended wear. The milled Narrow Full Rocker is available in 2 sizes and provides the best fit for long, narrow footed horses. *See our Drop Forge version on page 11.



FR3CN	4 3/4W x 5 1/2L	\$39.15/each
FR4CN	4 15/16W x 5 3/4L	\$43.35/each

The Full Rocker Bar Shoe

The Full Rocker Bar Shoe features a special aluminum bar designed to give frog support. This shoe is useful for feet that exhibit crushed heels or have tubules that are folded well under the load zone of the heel.

When there is space between the bar and frog we suggest filling the area with **NANRIC** Advance Cushion Support, Vettec Equi-Pak™ or leather. This firm but resilient frog and buttress support system compliments stability of the entire heel, reducing pain and enhancing healing.

The rocker action of this shoe provides low level mechanics which can be enhanced by forging various levels of rocker in the shoe. The size 4 shoe is available in two styles. The ground surface is rockered with a moderate (C) radius or a heavy (E) radius. The size 5 shoe is available in a narrow pattern.

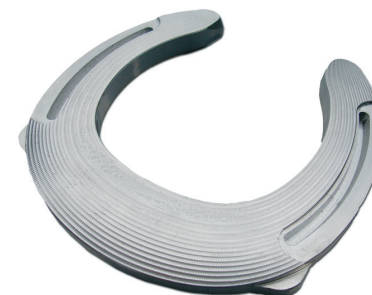


FRBAR2C	4 13/16W x 4 7/8L	\$56.00/each
FRBAR3C	5 1/8W x 5 3/16L	\$56.00/each
FRBAR4C	5 7/16W x 5 5/8L	\$57.00/each
FRBAR4E	5 7/16W x 5 5/8L	\$57.00/each
FRBAR5C	5 11/16W x 5 15/16L	\$57.00/each

The EZ Breakover Shoe

This shoe is designed with light EZ breakover properties and a flat heel branch. It is ideal for jumping, dressage, and eventing.

The rockered surface starts mid shoe and it has tabs for pulling clips. It is a terrific shoe for horses that need enhanced breakover. We offer a drop forge version in size 4 (DEZB4).



EZB1	4 3/4W x 4 13/16L	\$33.80/each
EZB2	4 15/16W x 5 1/16L	\$33.80/each
EZB3	5 3/16W x 5 5/16L	\$33.80/each
EZB4	5 7/16W x 5 5/8L	\$33.80/each
DEZB4	5 7/16W x 5 5/8L	\$14.00/each
EZB5	5 3/4W x 5 15/16L	\$36.55/each
EZB6	6 3/16W x 6 3/16L	\$36.55/each
EZB7	6 1/2W x 6 1/2L	\$38.15/each



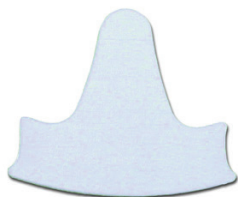
The Rocker Race Shoe

This shoe was designed with the modern racehorse in mind. Like our other full rocker shoes, the Rocker Race Shoe is rockered on the ground surface and flat on the foot surface.

It offers low mechanics that can be increased by forging more rocker in the shoe.



We offer Rocker Race Inserts designed to be welded into our Rocker Race Shoe to add frog support.



RRACE Insert Fits Sizes 1-5 \$6.85/each

RRACE000A	3 7/16W x 3 1/2L	\$23.00/each
RRACE000.5	3 5/8W x 3 3/4L	\$23.00/each
RRACE00A	3 13/16W x 3 7/8L	\$23.00/each
RRACE00.5	4 1/16W x 4 1/8L	\$23.00/each
RRACE0A	4 1/4W x 4 5/8L	\$26.50/each
RRACE1A	4 9/16W x 4 3/4L	\$26.50/each
RRACE2A	4 13/16W x 5L	\$26.50/each
RRACE3A	5W x 5 1/8L	\$29.70/each
RRACE4A	5 1/4W x 5 3/8L	\$29.70/each
RRACE5A	5 5/8W x 5 3/4L	\$29.70/each

The Steel Full Rocker Shoe

Many horses have mismatched feet. One foot is typically more narrow than the opposite. Our Full Rocker Shoe fits the larger more rounded toe quite well but it takes a bit of forging to make it fit a narrow foot. This new shape saves you precious time and effort and it is quite easy to open up and fit a wider toe. This versatile shoe can also double as a hind pattern and is currently available in 6 sizes with nail holes.



FR1	4 3/8 W x 4 7/8 L	\$10.60/each
FR2	4 5/8 W x 5 1/4 L	\$10.60/each
FR3	4 7/8 W x 5 7/16 L	\$10.60/each
FR4	5 W x 5 3/4 L	\$10.60/each
FR5	5 3/8 W x 6 L	\$10.60/each
FR6 w/ tabs	5 5/8 W x 6 3/8 L	\$11.15/each

The Drop Forge Narrow Full Rocker Shoe

The Narrow Full Rocker Shoe is a narrow version of the Full Rocker Shoe drop forged in aluminum. The new shape saves you precious time and effort and it is quite easy to open up and fit a wider toe. This versatile shoe can also double as a hind pattern and has a steel insert in the toe for added strength and extended wear. It is currently available in 4 sizes with or without insert (-\$1 without insert).



DFR2CN	4 5/8W x 5 1/4L	\$18.75/each
DFR3CN	4 3/4W x 5 1/2L	\$18.75/each
DFR4CN	5W x 5 3/4L	\$18.75/each
DFR5CN	5 1/4W x 6L	\$18.75/each

Redden Rocker Jig

The Redden Rocker Jig was designed and made by Dr. Redden to aid in rockering all types of shoes. It is made of steel and will sit on the step of your anvil.

To custom fit it to your anvil, a post can be welded on to drop into the hardy hole or sides can be welded on to hug the anvil.

Each jig is handmade. The rocker plate is available in an easy or aggressive angle.



Redden Rocker Jig	4 5/8W x 5 1/4L	\$60.00
-------------------	-----------------	---------

WTS - Wehrli Traction Shoe

NANRIC is the exclusive US distributor of the WTS Products manufactured in Switzerland. Stefan Wehrli, a sports and orthopaedic farrier, designed the WTS Shoe that is shaped around the pedal bone, offers great comfort to the horse and provides good traction, enabling the horse to express his full potential. WTS products are only available for vets and farriers who have completed the WTS course as it is very important that the WTS concept is used correctly.

WTS Product catalog and pricing available upon request.





Equilox®

Equilox® is an excellent composite with multiple uses. This composite makes hoof restoration a relatively simple task.

It also works exceptionally well as a glue bond for attaching aluminum shoes to feet with a variety of foot problems. Dr. Redden uses Equilox® to shoe a variety of foot problems including his laminitic cases with high-scale damage.

Equilox® provides build-up support and excellent adhesive properties. Both are necessary for total derotation (realignment) prior to a deep flexor tenotomy. This product is a great alternative to traditional nailing when the walls simply do not accommodate nails. Equilox® is also a great adhesive for gluing on Dalric shoes and cuffs. 6-8 minute set up time.

Equilox® cannot be sent via air shipment. EQ2 2 oz. \$19.10



Equilox® II

Ideal for larger applications. 6-8 minute set up time.



420 mL Cartridge \$105.00
Large Mixing Tip \$2.15

Equilox® Dispensing Gun \$85.00
for Equilox® I & II

Hoof Tite™ Equine Fast Set

Hoof Tite™ Equine Fast Set Urethane Adhesive surpasses the competition with a more versatile urethane product. Hoof Tite™ has a much stronger bond and better density level than other urethane adhesives. You can effectively adhere shoes to the foot, fill chips or cracks, and reconstruct hoof wall.

JorVet™ Hoof Grip *New*

JorVet™ Hoof Grip Ultra Fast Adhesive sets in 30 seconds and is available in 200mL cartridges. Sold individually or in a case of 12. Application gun and mixing tips not included.



Hoof Tite™ Fast Set 200mL \$22
JorVet™ Hoof Grip 200mL \$22
Dispensing Gun \$58 Mixing Tips \$1.30



Adhesive Accessories

Fiberglass or Kevlar Tape

This 2" wide roll of fiberglass tape has many uses. Dr. Redden uses it for Equilox® patches and for quarter crack repairs. It also works well to anchor aluminum rail shoes on derotating (aligning palmar angle) laminitic horses prior to performing deep flexor tenotomy surgery. The large roll will last a long time and will provide many versatile applications. We also offer Kevlar tape which is much stronger and more durable.



Fiberglass Tape 2"W x 150'L \$27.75

Kevlar Tape 2"W x 30'L \$58.00



Duct Tape

Duct Tape...it speaks for itself. It can be used for a multitude of reasons. Great for protecting the bottom of foot bandages. Note: Use with caution to attach shoes and bandages as it can cause excessive sweating to the feet and legs.

Duct Tape 4"W x 180'L \$37.00



Plastic Wrap Roll with Handle

This product is ideal for wrapping feet to allow Equilox® or Vettec adhesives or pad products to cure. The spinning handle makes applying the plastic much easier. 80 gauge plastic wrap is 5" wide and 1000' long.

Plastic Wrap 5"W x 1000'L \$14.50



NANRIC MEGA BOND™ and ULTRA PAD™ *New*

NANRIC MEGA BOND™ Adhesive Is a superior two-part urethane that sets in 30 seconds or less. ***Includes 2 tips.**

NANRIC ULTRA PAD™ Sole Support is a superior pour pad for horses feet with a shore A60 firmness. ***Includes 2 tips.**

NANRIC MEGA BOND™ 200cc \$21

NANRIC ULTRA PAD™ 200cc \$21





Latex Gloves

100 Large Latex exam gloves. Protect your hands from adhesives. Single Use / Non-Sterile. Lightly powdered.



Latex Exam Gloves Large \$17.50

Nonlatex Gloves

100 Large Latex-free and powder-free gloves used to avoid allergic reactions to latex.



Nonlatex Gloves Large \$35.75

Tongue Depressors Box of 50 \$5.50



Your Source for Knowledge



Visit our website www.nanric.com to read articles and lecture notes from Dr. Redden. Make sure to explore our equine podiatry products and watch our free E-Learning Videos.

Scan the QR code (at right) with your smartphone to access our social media sites, view shipping promotions and sign up online to receive updates on new products, articles and equine podiatry classes and events.



Sand Bar - Diamond Pad - Sanding Belt

Sand Bars with a foam core and aluminum oxide abrasive coating, with a medium/course grit. Diamond Sanding Pads finish a foot well and last 5 times longer than the aluminum oxide pads. Measure 4" x 2 1/4". Ceramic belts give the best life for metal use and many farriers have found these to be the best value for the quality. The belts measure 2" x 36" and are packed 10 per box.



Sand Bar	1"W x 4"L	\$2.50
Diamond Pad	50 Grit	\$18.00
Sanding Belt	40 Grit	\$8.00

Quarter Crack Repair

Stainless Steel Safety Wire

1 lb. container of .020 stainless steel safety wire. For use with safety wire pliers in quarter crack repair.



Stainless Steel Safety Wire .020 \$15.50

Safety Wire Pliers

Safety wire pliers are used to make a uniform twist in stainless steel wire for lacing quarter cracks. The pliers have spring return and heavy duty locking jaws with a spin plunger.



Safety Wire Pliers 9"L \$30.00



Screw Eyes	Small (217 1/2)	\$2.00
Zinc plated steel		
Pack of 10	Large (216 1/2)	\$2.00

HOOF BOSS - Electric Hoof Knife

Designed for the Farrier or Veterinarian who needs a rugged and long lasting powered hoof trimming tool. The 12 pc Complete Horse Hoof Care / Trimming Set meets basic hoof trimming, hoof maintenance and intricate hoof care needs. You can use the Hoof Boss trimmer to quickly and effortlessly trim the hoof wall, sole, and flare with smooth results. For more intricate hoof care needs, use the additional attachment discs included to treat laminitis, clean out sand cracks, perform hoof resections, and many other types of hoof care tasks. Available in US and European voltage. Set includes: • HOOF BOSS Knife with new paddle switch • 4 Tooth Chain with Disc • Power Rasp Disc • Trimming Rasp Disc • Green "V" Groove Cutting Disc • Flap Disc Sander • Chain File • Tail Tie • Allen Wrench • Carrying Case • Safety Glasses • Instructional DVD



HOOF BOSS	Complete Equine Hoof Care Set - Plug-in	\$369.99
HOOF BOSS	Complete Equine Hoof Care Set - Mobile	\$379.99



Vettec Hoof Care Products

Vettec Equi-Pak™ and Equi-Pak Soft™



Equi-Pak™ is a fast setting, liquid urethane hoof packing material that provides durable, shock absorbent, cushioned support which retains its shape and flexibility indefinitely.

Equi-Pak™ can be used with or without a pad. It adheres to the sole sealing out moisture and debris while protecting both the frog and sole. Equi-Pak™ will leave the sole in excellent condition, eliminating cheesy sole.

Equi-Pak Soft™ is nearly two times softer than regular Equi-Pak™ and has a 40 second set time. It can be used on horses with thin soles and deep commissures and works great in therapeutic cases and other

sensitive situations. Equi-Pak Soft™ remains soft, even in cold temperatures.

Vettec Equi-Pak™	210cc Cartridge	\$23.20
or	Case of 12 (Save 5%)	\$264.48
Vettec Equi-Pak™ Soft	210cc Cartridge	\$23.20
	Case of 12 (Save 5%)	\$264.48



Vettec Equi-Pak CS™

- Infused with copper sulfate to effectively treat most cases of thrush.
- Can be used as a preventative measure during wet seasons.
- Eliminates the need to pick out the feet and apply daily medication.
- Sets in less than 1 minute.
- Allows for faster, thicker hoof wall and sole growth.
- Provides the same protection and support as the original Equi-Pak™

Vettec Equi-Pak CS™	210cc Cartridge	\$24.50
	Case of 12 (Save 5%)	\$279.30



Vettec Equi-Thane Super Fast™

Super Fast™ is a fast setting adhesive that can be used to apply foal extensions or cuffs in as little as 30 seconds. It is perfect for cosmetic and small hoof repairs and can also be used to create a durable, lightweight custom shoe in minutes.

Hoof Preparation

1. Trim, rasp, and level hoof as normal. Remove any weak or soft material, especially at the white line area.
2. Dry hoof thoroughly using a heat gun or hair dryer. Do not overheat.

Note About Cleaning: If hoof is oily, wipe the affected areas with a cloth moistened with denatured alcohol being careful not to saturate the hoof. Dry thoroughly. Do Not Use Acetone!



Vettec Super Fast™	210cc Cartridge	\$23.20
	Case of 12 (Save 5%)	\$264.48

210cc Mixing Tips

Each	\$1.30
Case of 80	\$93.60



Vettec Adhere™

Adhere™ is a fast-setting urethane adhesive designed to bond aluminum or steel shoes to the hoof and to fabricate hoof wall repairs.

Glue on steel, aluminum and most plastic shoes as well as any hoof repair project.

Initial set time of one minute and final cure time of six minutes. Perfect for most every application. Sets hard with a superior bond, but maintains the flexibility necessary at the quarters and heels to allow the natural movement of the hoof.



Vettec Adhere™	210cc Cartridge	\$26.60
	Case of 12 (Save 5%)	\$303.24



Vetec & Accessories

Sole-Guard™ is designed for use without shoes and stays bonded to the feet for 2-3 weeks of light riding. Not recommended for use on sore, lame or very thin-soled feet.

- For use as a pad/packing material
- Apply directly to the sole and frog
- Fast and convenient
- Provides protection and support
- Great for providing support for heavy, late term brood mares
- Temporary protection for horses transitioning from shoes to barefoot
- Can be used as a thin protective layer on the shod foot



Vetec Sole-Guard™

210cc Cartridge
Case of 12 (Save 5%)

\$23.80
\$271.32



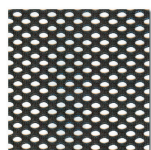
Vetec XL Dispensing Gun \$45.00



Diamond Dispensing Gun \$43.75

Mesh Screen Square or Roll

Mesh screen is used as a nail-on aid and to reinforce Advance Cushion Support. The screen can also be used with many other types of hoof packing materials to add stability.



Mesh Square	7 3/4"W x 7 3/4"L	\$1.00
Mesh Roll	7 3/4"W x 155"L	\$20.00

ProSoft™

ProSoft™ is a very soft and very strong silicone rubber and can be used for molds, packs, pads, bumpers in casts / prosthetics, **NANRIC** Ultimates™ and much more. It is a platinum-catalyzed silicone which is versatile and easy to use. ProSoft™ is mixed at 1A:1B by weight or volume and cures at room temperature with negligible shrinkage and without a "tacky" surface.



The ProSoft™ 400cc cartridge must be used with 400cc Mixing Tips and dispensed with the 400cc ProSoft™ Dispensing Gun. Each cartridge comes with two mixing tips.

ProSoft™	400cc Cartridge	\$38.50
400cc Mixing Tips	10 Pack	\$25.00

ProSoft™ Dispensing Gun \$85.00



Redden Foot Mold Kit



Advance Cushion Support can be used to make a negative mold of your horse's feet. In less than 15 minutes, a positive 3-D model can then be created by pouring Smooth-Cast 300 into the negative ACS mold.

Dr. Redden developed this technique for creating a diagnostic cast as a communication tool. His detailed shoeing and trimming protocol can be placed into the hands of farriers and veterinarians throughout the world.



The 3-D model simplifies the communication among professionals and bridges the language barrier. Dr. Redden often makes a diagnostic cast once optimum mass and balance have been reestablished in competitive horses. This serves as a baseline for future farrier reference. Kit contains 2 bottles of Part A & B.



Smooth-Cast 300	32 oz. Kit	\$28.50
Smooth-Cast 300	1 Gallon Kit	\$116.50
Redden Consultation Mold Kit w/ Custom Shoe		\$500.00



NANRIC Ultimates™

NANRIC Ultimates™

Features include:

- Two piece system: One piece cuff/wedge with attached bottom wedge designed to offer problem-free wean down.
- Efficient mechanical breakover that can be further enhanced if necessary with rasp or grinder. Simply rasp the breakover farther back if needed to soften the DDF.
- Two piece system offers approximately 18-20° palmar angle (PA), very similar to the original Modified Ultimate. To remove the bottom wedge, simply remove the four screws securing it.
- Strong, thick wedged cuff remains once bottom wedge is removed.



The Ultimate was designed by Dr. Redden as an emergency aid for treating acute laminitis. The Ultimate significantly reduces the action of the deep flexor tendon, which anatomically is a direct antagonist to the laminae. Significantly reducing the opposing forces transferred via the coffin bone greatly enhances the healing environment, reduces the risk of digital displacement (rotation and sinking), and helps diminish clinical pain.

Extensive venogram studies have shown a direct relationship between DDF laxity and improved circulation to the laminae and sole corium. Enhancing blood flow to compromised feet is the first step to enhancing the healing environment. Time is always of the essence. For best results, always consider acute laminitis an emergency, regardless of how quickly the horse responds to medication.

Note: The venogram procedure is technique sensitive and accurate interpretation requires a good working knowledge of the healthy as well as pathological ranges.

When the palmar angle exceeds 5°, the heels must be pushed back re-establishing a 0° - 3° palmar angle. This shifts internal load from the apex to the heel.

Removing a wedge is dependent on critical factors. Comparative venogram information used to monitor the response of the vascular supply to the laminae and sole corium is extremely valuable. When displacement of the coffin bone has occurred prior to using the ultimate it is wise to maintain the optimum level of mechanics until at least 3/4 of the hoof capsule has grown out in a favorable fashion. Do not be in a hurry to reduce the mechanics. **Call us if you need assistance.**

Also see the new NANRIC Mega Ultimates™ on pages 22-23 for more options.

ULT-5	Fits up to 4 1/4" W	\$80.00/pair
ULT-6	Fits up to 4 1/3" W	\$80.00/pair
ULT-7	Fits up to 4 3/4" W	\$80.00/pair
ULT-8	Fits up to 5" W	\$80.00/pair
ULT-9	Fits up to 5 1/2" W	\$80.00/pair
ULT-10	Fits up to 5 3/4" W	\$80.00/pair

Advance Cushion Support™

NANRIC Advance Cushion Support™

Advance Cushion Support™ (ACS) is a two part putty elastomer formulated especially for Dr. Redden. This versatile product is designed to mix easily, set quickly and maintain toughness even with ground contact. It is used for:

- Bruised tender feet. ACS can be quickly molded to the sole of a sore, barefoot horse. The custom fit offers a thick, protective shock absorber that can be easily bandaged to the foot or used in a variety of slip-on boots.
- Bar shoes and pads. ACS can be placed under a variety of bars as a means to distribute load and absorb concussion. Placed under the bar, it also prevents the normal collection of manure and debris. ACS also absorbs energy when placed under a pad because it becomes a pad itself when used with a mesh screen or perforated pad.



The Advance Cushion Support™ kit consists of two 16 oz jars; one part A and one Part B. It is available in **Gray** or **Pink** and both are 60 durometer.

Advance Cushion Support™	1 - 32 oz. Kit	\$71.90/kit
	6 - 32 oz. Kits	\$65.70/kit
	12 - 32 oz. Kits	\$61.90/kit

Using Ultimates and ACS Together!

NANRIC Ultimates™ and Advance Cushion Support™ work well together when treating laminitis. ACS is used as an aid to support the arch of the sole, and works well when used with adequate heel elevation and zero digital breakover. Notice the gray ACS filling the entire sole area. In most cases, one kit of ACS is adequate for one pair of Ultimates.



NANRIC Ultimate™ Application Kit

Dr. Redden's recommended products:



- 1 pair of **NANRIC** Ultimates™
- 1 Advance Cushion Support™ Kit
- 2 cotton combine pastern wraps
- 2 rolls of 4" 3M Elastic Tape*
- 2 rolls of Vetrap™



Application Kit \$200.00



NANRIC Mega Ultimates™

NANRIC Mega Ultimates™ *New*

Features include:

- Taller, more flexible, clear cuffs that adjust from a 45 degree hoof angle up to a 60 degree hoof angle with pre-drilled holes for injecting glue.
- Bubble (Rocker) Wedges
- Wedges: A 3.5 degree or 7 degree wedge can be inserted between the bubble and cuff to adjust the ground PA to 20+ degrees when presented with 10 degrees or more PA and or a negative PA foot. Ribs in the parts are an aid to tweaking the mechanics using radiographic information.
- Frog Inserts for positive pressure
- Toe Inserts for Derotation and Heel Extensions for Tenotomy

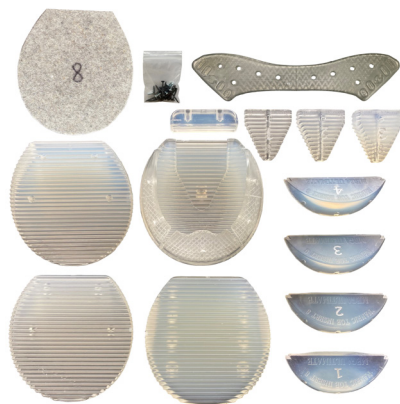


The Mega Ultimate is available in Kits or can be purchased as individual components.

NANRIC Mega Ultimate™ Complete Kit *New*

The Complete Kit includes the following:

- 1 Pair – Mega Ultimate Cuffs
- 1 Pair – Mega Ultimate Bubbles
- 1 Pair – 3.5 Degree Wedges
- 1 Pair – 7 Degree Wedges
- 1 Pair – Each Frog Inserts (Sizes 1-3)
- 1 Pair – Each Toe Inserts (Sizes 1-4)
- 1 Pair – 1/8" Felt Inserts
- 1 Pair - Tenotomy Heel Extensions
- 1 Pair - Mega Wraps
- Hardware (Screws)



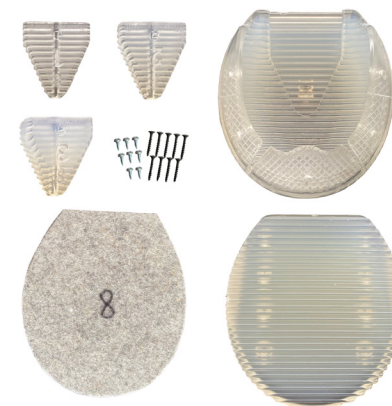
Most clients start with a Complete Kit as it includes all available components.

MEGA 4	Fits up to 3 5/8" W	\$245.00/Kit
MEGA 5	Fits up to 4" W	\$245.00/Kit
MEGA 5.5	Fits up to 4 1/8" W	\$245.00/Kit
MEGA 6	Fits up to 4 1/2" W	\$245.00/Kit
MEGA 7	Fits up to 4 5/8" W	\$245.00/Kit
MEGA 8	Fits up to 5" W	\$245.00/Kit
MEGA 8.5	Fits up to 5 1/8" W	\$275.00/Kit
MEGA 9	Fits up to 5 1/4" W	\$275.00/Kit
MEGA 10	Fits up to 5 1/2" W	\$275.00/Kit
MEGA 11	Fits up to 6" W	\$275.00/Kit

NANRIC Mega Ultimates™ Basic Kit *New*

The Basic Kit includes the following:

- 1 Pair - Mega Ultimate Cuffs
- 1 Pair - Mega Ultimate Bubbles. They are used to complement the standing tenotomy and are removed once the tendon is cut.
- 1 Pair - Each Frog Inserts (Sizes 1-3)
- 1 Pair - 1/8" Felt Inserts
- Hardware (Screws)



NANRIC Mega Ultimates™ Basic Kit

Mega 4	\$150/kit	Mega 8	\$150/kit
Mega 5	\$150/kit	Mega 8.5	\$170/kit
Mega 5.5	\$150/kit	Mega 9	\$170/kit
Mega 6	\$150/kit	Mega 10	\$170/kit
Mega 7	\$150/kit	Mega 11	\$170/kit

Individual components can be purchased separately.

Please call 877-462-6742 or visit nanric.com for pricing and availability.

NANRIC Mega Ultimate™ Derotation Kit *New*

The Derotation Kit includes the following:

- 1 Pair – Mega Ultimate Cuffs
- 1 Pair - Mega Ultimate Bubbles
- 1 Pair – 3.5 Degree Wedges
- 1 Pair – 7 Degree Wedges
- 1 Pair - Each Frog Inserts (Sizes 1-3)
- 1 Pair - Each Toe Inserts (Sizes 1-4)
- 1 Pair - 1/8" Felt Inserts
- 1 Pair - Mega Wraps
- Hardware (Screws)



NANRIC Mega Ultimates™ Derotation Kit

Mega 4	\$200/kit	Mega 8	\$200/kit
Mega 5	\$200/kit	Mega 8.5	\$230/kit
Mega 5.5	\$200/kit	Mega 9	\$230/kit
Mega 6	\$200/kit	Mega 10	\$230/kit
Mega 7	\$200/kit	Mega 11	\$230/kit



Dalric Cuffs and Extensions

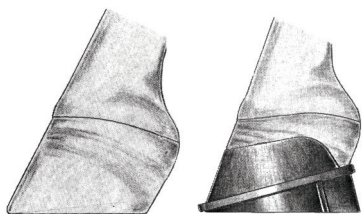
Dalric B Cuff

This product is used for foals with club feet. Use the B Cuff in the early stage of the club foot syndrome, as early detection is vital for maximum results. Most club feet develop around 4-8 months of age.

The cuff also protects the coffin bone from trauma.

Reasons for using wedge:

- Easy to apply
- Quick results
- Reduces strain of the deep flexor
- Prevents bruising and abscesses



B0	Foals 1-6 weeks	2" max foot width	\$79.50/pair
B1	Foals 1-6 weeks	2 3/4" max foot width	\$79.50/pair
B2	Foals 6-12 weeks	3 1/4" max foot width	\$79.50/pair

Product Instructions

Scan the QR code (at right) with your smartphone to learn how to apply any of the products we offer or visit www.nanric.com to view.



NANRIC Rocker Cuff™

This product is used for foals with club feet. The rocker greatly reduces DDF tension, which will relieve significant pressure of PIII against the inner sole. This mechanical action enhances blood supply to the sole. Enhancing sole growth preserves the integrity of the apex. The Rocker Cuff is easier to apply than a rockered aluminum shoe.

Trim technique:

Push the heel back from the widest point of the foot (lowering it from that point). It is very important to cover any area of the toe that has worn through or has fissures before gluing the cuff on. It is quite easy to trap bacteria in these areas which can result in an abscess. Dr. Redden prefers to use Keratex Putty to protect such areas. **Price is for Shoes Only.**



NC1	Foals 1-6 weeks	2 3/4" max foot width	\$52.50/pair
NC2	Foals 6-12 weeks	3 1/2" max foot width	\$52.50/pair

Dalric Lateral/Medial Extension 1 & 2

Lateral Extension used for:

- Toe in Ankles (Varus) fetlocks
- Bowed and Offset Knees
- Bowed Hocks

Optimal correction requires early application. (Birth to 2 months due to early physis closure.)

Reasons for Use:

- Easy to apply (adjustable)
- Dramatic results when used early
- Enhances dynamic stability
- Relieves stress on young bones
- Minimizes hoof and joint distortion

Note: Remove shoes as recommended to avoid an unwarranted pinching effect.

EXT1	Foals 1 to 6 weeks, max foot width 3"	\$66.50/pair
EXT2	Foals 6 to 12 weeks, max foot width 3 1/2"	\$66.50/pair

Medial Extension used for:

- Knock (Valgus) Knees
- Valgus Hocks

Note: This shoe has little or no effect on toe out deformities.



Dalric Lateral/Medial Extension 3

For foals with a maximum foot width of 3 3/4" we offer the Extension 3. A Dalric CS3 cuff that can be riveted to a predrilled 1/4" aluminum extension. Assembly required.

EXT3	Foals 12 weeks plus, max foot width 3 3/4"	\$109.50/pair
------	--	---------------

NANRIC Extension™

A second generation ABS (plastic) extension that is lightweight, easy to apply and very effective when used on young foals. Bottom has a tread pattern.

Indications:

- **Varus Fetlock (toed-in)** Apply to the lateral side of the hoof. Early detection is the key, as the optimum response period is 5-30 days of age.
- **Varus Hock (windswept)**
- **Valgus Knee (knock-kneed, toed out)**
- **Valgus Hock (windswept).** The optimum window of response is 30-60 days.

Apply with Vetec Super Fast™ or EquiloX®. **Price is for Shoes Only.**



NANRIC Extension	\$24.95/pair
-------------------------	--------------



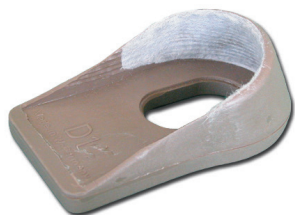
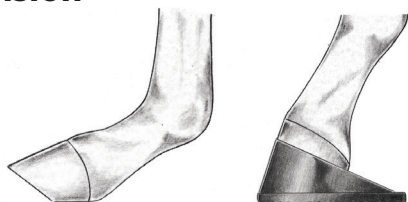
Therapeutic Shoes

Dalric D Heel Extension

For foals with weak flexors.

Reasons for Use:

- Easy to apply
- Dramatic results
- Prevents crushed heels
- Establishes proper joint alignment
- Prevents the usual heel bruises and abscesses



D1	Max. foot width 2"	\$66.50/pair
D2	Max. foot width 2 1/2"	\$66.50/pair
D3	Max. foot width 3 1/4"	\$66.50/pair

We previously offered Dalric Kits with accessories and adhesive but the Vettec SuperFast 50cc syringes are no longer available. **NANRIC** currently offers **NANRIC MEGA BOND™**, Vettec SuperFast™, Hoof Tite™ Fast Set, Jorvet Hoof Grip and EquiloX®.

Dalric Kits without adhesive include:
2 - tongue blades, 1 - tape, 2 - pair of gloves,
hardware and detailed instructions.



Dalric Cuff

The Dalric Cuff has a thick sole allowing for nail or rivet attachment of an aluminum shoe. Dr. Redden's advice is to glue on with EquiloX® when the cuff fails to fit snug and you need to fill gaps.

C1 max foot width 3 1/4"	\$64.00/pair
C3 max foot width 3 3/4"	\$64.00/pair
C5 max foot width 4 1/4"	\$64.00/pair
C7 max foot width 4 3/4"	\$72.00/pair
C8 max foot width 5"	\$72.00/pair
C9 max foot width 5 1/2"	\$72.00/pair
C11 max foot width 6 1/4"	\$72.00/pair



Redden Consultation Service

How Can Dr. Redden Help You?

Dr. Ric Redden, an innovative veterinarian, farrier and horseman, is on the cutting edge of technology developing ideas, products and services to meet the equine podiatry needs of your horse. The Redden International Consulting Service assists you in dealing with equine foot problems. With 35+ years of experience, this unique veterinary practice limits service to the care of the equine foot.

Dr. Redden is an available source of state-of-the-art techniques and procedures concerning foot problems from angular limb deformities to life threatening laminitis. Our services are tailored to the specific needs of veterinarians, farriers, owners, and insurance companies. Consultations include interpretation, diagnosis, treatment plan, prognosis, a recommended follow-up program and communication with the responsible parties.

There are two phases to a consultation. The first phase is \$250 and sets the stage for basic recommendations, the urgency of the issue, and the degree of difficulty that may be encountered. The second phase is an additional \$500 and involves an one on one, dedicated, prescheduled walk through the process.

Consultation Procedure - Starting at \$500

Direct line communication with your attending veterinarian and farrier establishes professional contact and enhances the potential for success. To better serve you, Dr. Redden needs the following:

- **Case History** (including onset of injury and cause), age, breed, intended use, medication, prior treatment and response of your horse.
- **Recent video and/or photographs of your horse.** The video should reveal the extent of lameness, body language and eye expression when indicated. Very lame horses need to take only a step or two. CAUTION: Do not walk lame horses excessively. Dr. Redden needs to see specific detailed characteristics of your horse's foot/feet. When videoing or photographing the sides, front and rear of the foot, place the camera at ground level to prevent distortion. Carefully pick up the foot and zoom in on the bottom when possible. Note: Do not force prolonged standing when bilateral lameness is involved.
- **Recent lateral and D-P radiographs** are essential components for all consultations. Dr. Redden prefers that the film reveal soft tissue, as well as bone, and have wall and ground markers. It is very important that the primary beam pass through the foot at the level of the palmar surface of PIII.

Please email rreddendvm@gmail.com or visit www.reddendvm.com to upload large files to Dr. Redden's Dropbox. If mailing please notify us by phone or email and ship to:

R.F. REDDEN, DVM
PO BOX 507 (Billing)
8235 McCOWANS FERRY RD (Shipping)
VERSAILLES, KY 40383 PHONE: 859-983-6690





X-Ray Equipment and Supplies

Lateral & D.P. Positioning Blocks



These wooden blocks were designed by Dr. Redden to offer consistent positioning of the digit for lateral and DP views. Dr. Redden strives to obtain as much information possible from his film, and he has developed a very methodical, disciplined protocol for every radiographic exam.

- Dr. Redden finds using two blocks assures accurate representation of radiographic balance (extremely valuable views for farriers).

Two blocks simplifies the task of radiographing extremely lame horses. The sound foot can be quickly set on one block followed by the lame foot.

- Block height is specific for each machine. Primary beam height should be approximately 3/4" over the top of the block to assure a true lateral view, offering accurate sole depth measurement, palmar angle, medial-lateral balance, and distal HL zone. **Exception:** Saddlebreds, Walking Horses or others with a package or exceptionally long hoof capsule.

- Cross wires imbedded in the face of each block delineate the ground surface in the lateral and DP views. Dr. Redden uses E-Z-Paste® to clearly define the horn wall.

Dr. Redden advises that the foot should be placed on the edge of the block touching the cassette. The alignment of the foot should be such that the line formed by the center of the heel and center of the toe run parallel to the long vertical cross hair. Ideally, the short horizontal cross hair runs through the center of the foot and gives you a direct line to follow for your x-ray beam. Dr. Redden updated the blocks by offsetting the cross wires so that the intersection is closer to the cassette. **Note:** If the horse toes in or toes

- out, set your blocks accordingly to get an optimal shot.



out, set your blocks accordingly to get an optimal shot.

out, set your blocks accordingly to get an optimal shot.

NR-1 Wooden Block	3 3/8H x 8 1/16W x 9L	\$69.00
NR-1 Narrow Block	3 3/8H x 7 1/16W x 9L	\$49.00
NR-2 Wooden Block	2 5/16H x 7 1/16W x 9L	\$59.00



Redden Navicular Block™

This aluminum 65° D.P. Positioning Block block is designed to be used with all MinXray® units and will work with most other brands.

This unique positioning block designed by Dr. Redden assures repeatable, consistent, and precise positioning for 65° D.P. or 45° oblique and flexed lateral views. The block can be used without the aid of the X-ray machine tray and swing arm attachment.



Note: Take the time to measure Source-Image Distance (SID) and also align the x-ray machine properly with the lines on the block. Please advise cassette thickness when ordering.

Aluminum Navicular Block	5/8"	Cassette Slot	\$155.00
	7/8"	Cassette Slot	\$160.00
	1 5/8"	Cassette Slot	\$165.00
		Replacement Foot Support	\$30.00

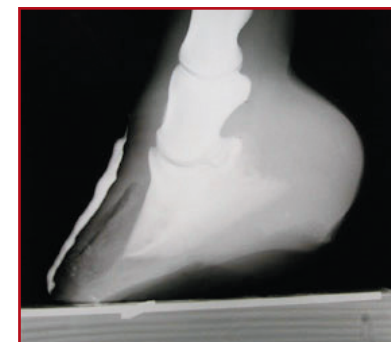
E-Z-Paste®

E-Z-Paste® is a radiopaque paste that provides excellent radiographic visualization of the true hoof wall. One tube contains 454 grams (16 oz.). Applied in a continuous bead (pencil size) from the coronary band to the ground surface, the paste appears as an opaque (white line) on your film. Due to the thin depth of horn at the most proximal crown of the hoof wall, the actual horn margin is never visible on even the softest penetrating views.



Dr. Redden uses the paste because it provides more information than his previous wire technique. At best, the wire along the face of the wall only touches the high spots.

E-Z-Paste® is extremely easy to use and provides great results.



E-Z-Paste® 16 oz. \$81.00

In this radiograph, note how the E-Z-Paste® (white line) shows the tiny details of the hoof wall.

High quality radiographs are priceless...they are the blueprint to follow when shoeing all horses!

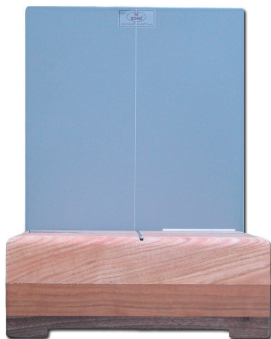


X-Ray Grid

The 9"x11" and 11"x13" grid has a 6:1 ratio, 103 lines per inch and 26-32 focal distance. Each grid strip is laminated and baked after the gluing procedure, which ensures absolute rigidity between the strips, as well as heat and moisture resistance. This process completely prevents warping and cracking over the course of time.

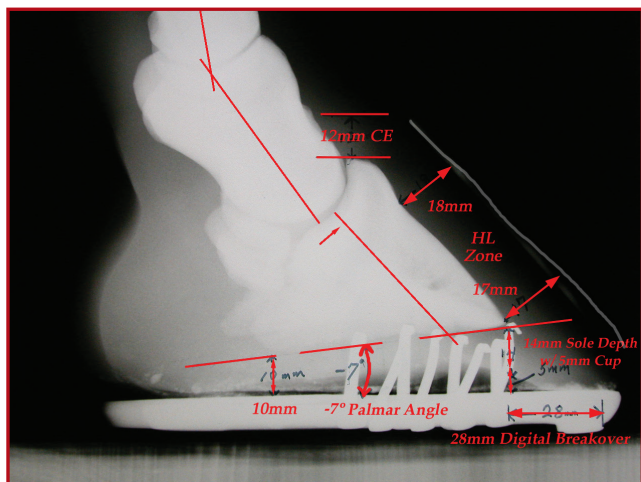
Each grid is subjected to radiographic testing prior to shipment, and only those grids which have passed the test for perfect strip alignment are delivered to our customers. The test film supplied with all our grids is your assurance of quality.

Dr. Redden has found that this grid greatly enhances the detail and contrast with venograms and all navicular studies. This grid has a short SID of 26-32" making it more effective for portable x-ray machines. **A must have for equine podiatrists!**



X-Ray Grid	9" x 11"	\$145.00
X-Ray Grid	11" x 13"	\$179.00

Soft Tissue Parameters



Want to learn how to measure soft tissue parameters? Visit nanric.com/soft_tissue_parameters.html to see Dr. Redden's step by step instructions on measuring Palmar Angle, Horn-Lamellar (HL) Zone, Coronary Band/Extensor Process (CE), Sole Depth, and Digital Breakover. Soft tissue radiographs are essential for equine podiatrists.

Hoofjack® Hoof Stand *New*

The Hoofjack® Mini was developed to be the perfect height and width to support the hooves of miniature horses. The Hoofjack® Medium has the same base diameter as the Hoofjack® Standard but is 3" shorter. The Hoofjack® Standard base with accessories will accommodate a pony up to a small draft or draft cross (hooves up to a size 7).

The Hoofjack® Standard is the most popular and consists of one standard base with two magnets, one standard cradle, and one straight post with standard rubber cap. Supports the hoof for daily care, treatment, bandaging, and more. Available in Mini, Medium and Standard bases. Mini and Medium bases available in Green and Standard bases colors are Green, Pink, Purple, and Red. For smaller feet, the new Mini cradle on a Standard post is available for \$40.50. **We now offer the Hoofjack Dental Attachment. Available in Standard or Articulating.**



Hoofjack Mini	\$175.00	Dental Attachment	\$215.00
Hoofjack Medium	\$205.00	Articulating	\$342.50
Hoofjack Standard	\$216.25		

Distal Steel Hoof Stand Toolrack

\$94.55



The Distal Steel Hoof Stand Toolrack is machined from a single piece of 6061 Aluminum. The tool rack slips onto the post of your hoof stand to hold your trimming or finishing tools. Each side is drilled and tapped so the factory magnets can be relocated if you wish.

HOOF-it® Hoof Stand

HOOF-it® Blacksmith Horse Hoof Stand features a modern design allowing the farrier, hoof trimmer, or horse owner to switch from the hoof cradle to the hoof post in one easy step. The cradle and post are covered with a shock-absorbing non-slip rubber material, which provides a comfortable support system for the horse.

- Made in the USA
- 2-in-1 post and cradle
- Hoof care made easy

Available in the Black, Green, or Purple.

The HOOF-it® Pro has a non-skid rubber base boot.



HOOF-it	\$189.00
HOOF-it Pro	\$199.00



Educational Books

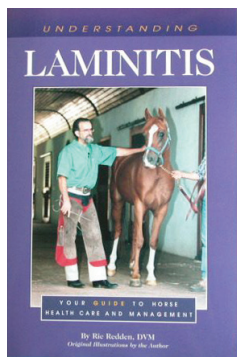
Understanding Laminitis

by Ric Redden, DVM

This book was written as a basic teaching format for those who want to understand more about this devastating disease. Laminitis is a very complex secondary syndrome that continues to hold many secrets, but fortunately much progress has been made in this field. This book will help you better understand what is happening to the sensitive structures hidden within the foot.

Dr. Redden's practice remains the premier equine podiatry practice in the horse world. His extensive experience has carried him throughout the world working with difficult cases as a farrier and veterinarian. Dr. Redden suggests a meaningful grading system that simplifies the classification of "degree of damage" to the digits. His treatment protocol is directly influenced by the scale of damage. (141 pages)

**Available in e-Book format only.*



Understanding Laminitis \$9.99

Dr. Redden's Equine Podiatry Principles & Mechanical Concepts

by Ric Redden, DVM

This e-book was written for farriers and veterinarians that have a strong desire to enhance their knowledge and skills in the field of Equine Podiatry. Radiographic and venogram information coupled with dependable mechanical concepts can open the doors of opportunity for career and life threatening foot issues. Chapters include:

- Understanding What We See
- Obtaining the Most Informative Radiographs
- Understanding the Mechanical Formula
- How to Plan the Mechanical Strategy
- The Value of Radiographic Guided Therapeutic Shoeing
- Selecting the Optimum Mechanical Shoe
- Let's Focus on Laminitis

(208 pages) **Available in e-Book format only.*



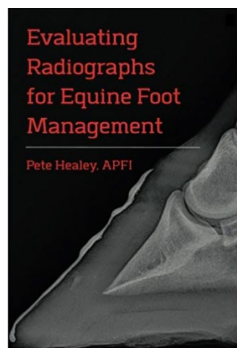
Equine Podiatry Principles & Mechanical Concepts \$40.00

Evaluating Radiographs for Equine Foot Management

by Pete Healey, APFI

The equine foot is a complex organ. It's form and function has a direct influence on the performance, longevity and value of the horse. The book contains radiographs that provide specific information about soft tissue, bone angles and the biomechanical efficacy of the foot.

Included case studies describe how to measure and evaluate healthy parameters as well as mechanical formulas for foot rehabilitation. Using this standard for evaluation provides a common language between professionals for managing the horse's feet. (125 pages)



Evaluating Radiographs for Equine Foot Management \$34.95

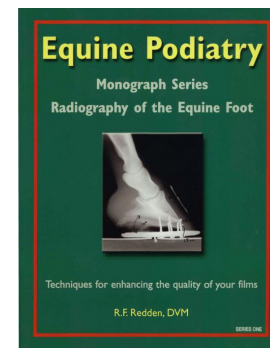
Radiography of the Equine Foot

by Ric Redden, DVM

This monograph describes the techniques for enhancing the quality of your films and is the first in a series of monographs on Equine Podiatry by Dr. Redden.

Radiography is an extremely important part of Dr. Redden's equine podiatry practice. Development of his radiographic techniques was driven by a strong desire to gain as much information as possible from his films. His attention to detail has resulted in a protocol that consistently produces undistorted, high-detail images. The amount of detail in these images provides the veterinarian and his/her farrier with a powerful tool for evaluating the bony and non-bony tissues of the foot.

In this monograph, Dr. Redden walks you through routine radiographic techniques, highlighting areas where slight modifications could mean a great improvement in the quality of your film and thus in the amount of information you can derive from your films, equipment and your film. (25 pages) **Available in print or e-Book format.*



Equine Podiatry Monograph \$15.00



Hoof Care and Medical Products

Keratex Hoof Hardener & Putty



This product is formulated to produce a tougher hoof capsule, reduce the moisture content and increase the durability of the hoof. Dr. Redden has found this to be useful during the rainy season as an adjunct to preventative foot programs. Weaker, shelly walls respond quite well to daily treatment with a thin coat of Keratex Hoof Hardener. Painting the cracks and crevices eliminates the moist,



dark areas that harbor bacteria and fungi therefore keeping feet healthier.

Keratex Hoof Putty is a malleable wax containing slow release organic disinfectants that fight fungal and bacterial problems. It is a self-adhesive that can be used on shod and unshod hooves and is a great filler for cracks.

Keratex Hoof Hardener	8.45 oz.	\$44.95
Keratex Hoof Putty	7 oz.	\$29.95

Hoof Guard® & Jim Ricken's Foot Formula #1



Hoof Guard® Sealant is a clear sealant with high impact *Kevlar® Aramid Fiber added for stronger healthier hooves that keeps natural moisture in and the weather out. It seals nail holes and small cracks preventing harmful bacteria from entering.

Jim Ricken's Foot Formula #1 is for use on the sole and frog of horse's feet to treat puncture wounds, thrush, bruises or tender feet. Paint on twice a day for 5 days and repeat if necessary.



Hoof Guard	16 oz.	\$25.15
Ricken's Foot Formula #1	4 oz.	\$18.00

Durasole

Durasole is an iodine-based product formulated to harden the equine exfoliating sole. It is extremely effective in enhancing the protective capabilities of the exfoliating sole and does not affect the proximal sensitive sole. Durasole is highly concentrated and formulated to be used in small quantities. A few drops on your horse's sole can make a big difference.

Durasole	4 oz.	\$15.10
----------	-------	---------



Venice Turpentine

Equine Venice Turpentine to harden and toughen soles. Used on the sole of the hoof to toughen or harden the hoof in cases of soreness or tender footed horses. In this application it can be painted daily on the sole of the hoof and topped with brown paper until the desired results are achieved. Venice Turpentine has also been used for its antiseptic qualities - in such cases it can be applied to rundown and other types of injuries.



Hawthorne Products Venice Turpentine	16 oz.	\$21.20
--------------------------------------	--------	---------

Farriers' Fix Hoof Oil *New*

Developed by Farriers for Farriers Farriers' Fix Hoof Oil is a therapeutic, topical treatment that benefits the entire hoof from the coronary band to the sole and frog. It is great for use on horses with hoof issues like sore feet, quarter cracks, laminitis, and thrush. It's also great for general hoof maintenance and use on your horse's hoof pads.

Features

- Made in the USA
- Available in 16 oz. or 64 oz.
- Helps dry cracked hooves
- Kills Thrush & Bacteria
- Alleviates Founder (Laminitis)
- Replaces Venice turpentine

Farriers' Fix	16 oz.	\$27.95
Farriers' Fix	64 oz.	\$84.95





Eclipse

- Antibacterial and Antifungal rinse for below the coronary band.
- Effective contact killer for the treatment of Thrush, Canker, White Line Disease, and Cracked Heels.

- May be used on the sole or frog and as a flush for open abscesses.
- From PRP Technologies - the makers of Lacerum Wound Healing Products.

Application:

Clean area and saturate with rinse. If possible saturate cotton and pack any openings to keep dirt out and hold rinse in contact with the affected area. Change packing and reapply once per day.



Eclipse Hoof Treatment 8 oz. \$19.00

Lacerum® Finish Cream

For topical use, Lacerum® Finish Cream is made from animal proteins and the antioxidants Vitamins "A", "E", and "C" are combined with an Aloe Vera cream; giving this product the power to accelerate wound healing, reduce scarring, and minimize change in hair color and skin pigmentation.

Lacerum® Finish is derived from an approved USDA equine whole blood source, and is non-toxic, non-caustic, and won't burn or sting already compromised tissue.



Lacerum® Finish Cream	25 mL	\$20.00
Lacerum® Wound Cleanser	8 oz.	\$32.00
Lacerum® Wound Cleanser	16 oz.	\$39.00

KERA-MEND

KERA-MEND™ Hoof Crack and White Line Paste is a multi-use paste formulated to provide a barrier for hoof cracks and to treat white line disease. With antibacterial and antifungal properties it provides an excellent maintenance treatment post abscess. Works great under pads and glue on shoes to keep surface hoof wall free of bacteria and fungi.

Features:

- Antimicrobial hoof paste for topical use
- Easy to pack into hoof cracks, crevices, and nail holes
- Formulated for horses



Hoof Crack and White Line Paste 4 oz. \$36.00

AquaCast™ Liner

AquaCast™ Liner is the perfect replacement for W.L. Gore's PROCEL® Cast Liner and eliminates the worries of keeping the cast dry. It is a waterproof, breathable cast padding containing billions of tiny pores that stop the passage of liquid water but allows water vapor to pass through.

When a fiberglass cast padded with AquaCast™ Liner gets wet, most of the water drains quickly out of the ends of the cast. The remaining moisture is warmed by body heat, becomes vapor and passes through the Cast Liner and fiberglass casting tape. No special drying is necessary.

AquaCast™ Liner is not sterile and should not be used over open wounds or abraded, broken or otherwise compromised skin.

Note: AquaCast™ Liner is less resistant to cut through than synthetic or cotton padding. Therefore, it is important to use a "light hand" with the cast saw. One box contains 12 rolls. Comes in 2", 3", 4" and 6" widths.

AquaCast™ Liner 4"W x 66"L \$23.50/roll



Gel Cast Padding

Impact Gel filled sleeve that can be cut to any size or shape. Is a firm set gel that will not ooze or leak once cut.

Ideal for making bumpers inside casts to prevent rub sores.

1/4" Gel Cast Pad	5"W x 17"L	\$20.00
1/2" Gel Cast Pad	5"W x 17"L	\$25.00



Fiberglass Cast Tape



12'L fiberglass cast tape available from Equicast & Delta-Lite® Plus.

Can be put on a hoof with or without shoes. Ideal for secure application of the **NANRIC** Ultimates™.



Equicast 2" \$17.40

Delta-Lite Plus 2"	\$6.99
Delta-Lite Plus 3"	\$8.50
Delta-Lite Plus 5"	\$11.00



CombiRoll®

CombiRoll® provides horsemen the ideal bandage material used by veterinarians for post-surgical bandaging and follow-up rehab.

When cut 48" to 52" in length, this bandage provides excellent support and protection with consistent pressure. One roll will make 10 to 12 bandages.

CombiRoll®	8"W x 10 yards L	\$30.00
	12"W x 10 yards L	\$39.00
	14"W x 10 yards L	\$45.00



3M™ Elastic Tape

3M™ Elastic Tape is a high twist, cotton elastic cloth tape with a rubber based adhesive. It is designed to help provide elasticity needed for dynamic/pressure dressings, and it conforms easily to difficult areas. The porous construction allows skin to breathe and allows for moisture transmission. This is great for taping on Ultimates, applying bandages, and covering the tops of casts to keep out debris. Each box contains 6 rolls.



3M™ Tape	2"W x 2 1/2 yards L	\$7.10/roll
3M™ Tape	4"W x 2 1/2 yards L	\$13.65/roll

Lily Pads

This unique product was designed and developed by Dr. Ric Redden as an emergency support aid for various foot ailments. Taping this product to the frog of most feet offers the painful foot a resilient cushion support as well as protection, slight heel elevation and the benefit of slightly reduced breakover.

Lily Pads	\$21.50/pair
-----------	--------------



Industrial Felt

This durable, lightweight orthopedic felt has many great uses in bandaging and casting. It is ideal for cushioning and wicking. We have added 1/8" Felt Ultimate Inserts to prevent excess moisture build up between the sole and Advance Cushion Support.

Industrial Felt	1/8" x 12"W x 36"L	\$21.55
Industrial Felt	1/4" x 12"W x 36"L	\$15.00
Industrial Felt	1/2" x 12"W x 36"L	\$37.00
Ultimate Inserts	Sizes 4-11	\$8.00/pair



Vetrap™

Vetrap™ is a flexible self-adherent bandaging tape that is ideal for applying pressure bandages. It is also a great source of protection when used in conjunction with Cotton Combine.

Vetrap™	4"W x 180"L	\$2.80/roll
---------	-------------	-------------



Animalintex®

Animalintex® is easy to use, easy to remove, very economical and extremely useful for a variety of lower leg problems.

- Use hot or cold over acutely inflamed areas.
- Hot nails. (If your farrier inadvertently gets a nail too close to the sensitive structures of the foot.)
- Painful focal coronary band lesions, abscesses, bruises or lacerations.
- Dr. Redden often uses Animalintex® to soften extremely hard, dry hoof capsules prior to a thorough radiological exam.

Animalintex® Poultice Pad	8"W x 16"L	\$11.30
---------------------------	------------	---------



Keystone Leather Pads and Bar Wedges

Available in 12 pair bundles. (bndl)

4 REG	Pad	\$87.00/bndl
4 XHVV	Pad	\$109.20/bndl
4 XXHVV	2° Wedge Pad	\$156.00/bndl
6 REG	Pad	\$103.20/bndl
6 XXHVV	2° Wedge Pad	\$177.00/bndl



*Looking for a product and can't find it?
Call us and we'll be happy to assist you.*



Tools and Equipment

DHC2000 Torch

The DHC2000 is an oxy-acetylene torch capable of welding, cutting, brazing, soldering, leading and preheating metals, such as: Mild Steel, Stainless Steel, Aluminum and Cast Iron. Cuts steel like plasma - welds like TIG. Causes less distortion than MIG - and results in fine soft weld joints - perfect for custom work. Requires only 4 PSI for both the oxygen and acetylene. Up to 50% - 70% gas savings. Made in the USA since 1982 and comes with a lifetime warranty. The ProMaster Pack includes: 8" straight and curved extensions, an air acetylene tip, and #00, #1.5 and #2.5 tips.



DHC2000 Torch	\$499	DHC2000 #2 Tip	\$33
DHC2000 Torch Pro	\$599	DHC2000 Cutting Tip	\$33

Aluminum Welding Rods

These flux cored aluminum alloy rods are perfect for general aluminum welding. More specifically, they are perfect for welding aluminum frog supports into any of our aluminum horseshoes. These rods are easy to use and contain an extremely active flux formulation that helps prevent oxidation at the weld areas. Available in a 3 lb box.



Aluminum Welding Rods	3 lb box	1/8" x 32" L rod	\$260
-----------------------	----------	------------------	-------

Double S Driving Hammer

The Double S Driving Hammer has a unique patented anti-shock system built into the head of the hammer to reduce vibrations.

Made from high quality anti-chipping material with a grip striped head, coupled with an anatomically designed handle made from high quality wood. Also features a magnet in the bottom of the handle.

This hammer will certainly become a true favorite with farriers worldwide. Made in Italy.



Double S Driving Hammer	6, 7, 8, or 10 oz	\$220.15
-------------------------	-------------------	----------

Ergonomic Hofi Style Cross Peen Hammer

This ergonomic cross peen hammer creates less body fatigue and fosters a greater ease and skill for shaping metal on the anvil.

The Hofi style hammer is a must if your elbow is gone. The hammer has a totally different swing action. The mass, located close to the handle, lets the hammer do the work for you. The tapered handle offers a very loose grip, which aids in the prevention of carpal tunnel syndrome. Try it for just 2 days, and you will be convinced. The shape of the hammer allows it to be easily tilted during a blow without throwing off the center of gravity. This is important for accurate blows -- and is most difficult using traditional hammers.



Cross Peen Hammer	1.5, 2.4 lb	\$155
	3.5, 4.6 lb	\$170
	7.5 lb	\$250

Ergonomic Rounding Hammer

This rounding hammer is ergonomically designed to work with the natural movements of the body. Made from top quality forged and heat treated tool steel. Finished and fitted with shock mounted wood handle.

Used by both Blacksmiths and Farriers. These hammers are all hand dressed and finished by experts. Forged hammers will vary somewhat as they are hand forged and hand dressed.



Rounding Hammer	2.6 lb	\$155
	3.7 lb	\$170
	4.6 lb	\$185

Ergonomic Straight Peen and Diagonal Peen Hammer



Straight Peen Hammer	2.6 lb	\$155
	3.5 lb	\$170



Diagonal Peen Hammer	(Available in Left or Right Hand)	2.6 lb	\$185
----------------------	-----------------------------------	--------	-------



MFC Half Round

The MFC Half Round is made from the finest quality steel and available in 3/8" and 1" cutting heads.

The 3/8" half round is 10" long and the 1" is 14" long. The 3/8", also known as the Redden Rongeur, is ideal for hoof wall resections or trimming bone during surgery.



NANRIC Rongeur	12"L - 3/8" half round
MFC Half Round	12"L - 1" half round
MFC Half Round	14"L - 1" half round

\$231.00
\$317.40
\$317.40

MFC One-Handed Foal Nipper

The updated 10" one-handed foal nipper has a hook that goes over the top of your hand and a hook for your fingers, enabling you to open the nipper with only the one hand while you hold the hoof of the fractious baby with the other hand.

Ideal for farriers who do a lot of breeding farm work or work with miniature horses. This tool is the same as the MFC Mini Nipper below but has the custom reins as shown.



MFC One-Handed Foal Nipper	10"L
-----------------------------------	------

\$213.45

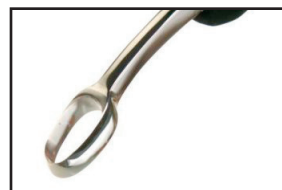
MFC Mini Nipper

The 10" Mini Nipper is made from H13 steel with 5/8" cutting blades which makes it easier to trim foals or small hooves.



MFC Mini Nipper	10"L	\$178.85
------------------------	------	----------

MFC Abscess Knife



Long Rubber Handle	\$63.85
Short Wooden Handle	\$49.50
Long Wooden Handle	\$43.85



MFC Knife (Special Grip Handle)

\$49.10

This MFC Knife has a long double curve drop blade and a special grip rubber handle and is available in left or right hand.



MFC Mini Hoof Knife

\$48.45

Left or Right Hand
6" Long



MFC Knife (Long Handle)

This MFC Knife has a long double curve drop blade and a contoured long handle.

The knife is available in left or right hand.



Long Rubber Handle	\$60.50
---------------------------	---------

Long Wooden Handle	\$60.50
---------------------------	---------



MFC Loop Knife

This MFC Loop Knife has a narrow loop and a contoured long handle available in rubber or wood. The loop measures 1 1/2" long.



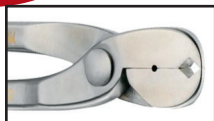
Long Rubber Handle	\$67.05
---------------------------	---------

Long Wooden Handle	\$75.50
---------------------------	---------



MFC Crease Nail Puller

MFC hand forges each Crease Nail Puller from H13 steel. Only a nail puller made from H13 steel is both hard enough and tough enough to pull thousands of nails with the proper beak configuration. You can get a good grip on a nail head, and yet the beak will not break or wear out quickly.



MFC Crease Nail Puller 12"L \$131

MFC Pull Off

Made from H-13 steel.
Available in 12" or 14" length.



MFC Pull Off 12"L \$172.20
14"L \$178.85

MFC Hoof Nipper

These nippers are made from H13 steel and forged by hand at the anvil. No dies are used and they are crafted exclusively by the skillful hands of MFC's smiths.

The MFC Hoof Nipper comes in standard 12", 14" and 15" length. The blade edge is hardened to Rockwell 65 hardness, the base of the blade to 60, and the handles to 50 (so they will not bend).

MFC Hoof Nipper 12"L \$226.75
14"L \$240.50
15"L \$254.00
16"L \$266.80



MFC Racetrack Nipper



These nippers are made with 7/8" cutting blades instead of the standard 1 1/16" cutting blades and they are made just a little lighter than the standard 14" nippers.



MFC Racetrack Nipper 14"L \$240.50

MFC Nail Clincher

\$172



Low Nail

The MFC Nail Clincher is hand forged from H13 steel to insure the life of the clincher teeth. The head is formed to give you a good clinch every time with only light pressure.



High Nail



Saddle Nail

Double S Knives

Double S Knives are made in Italy. Available in Loop, Rhino, Rhino Deluxe, Leo, Leo Deluxe, Classic, Vet Deluxe, 25th Anniversary & Vet Loop (S, M, L).



Loop \$54.75



Rhino \$49.10 Deluxe \$65.00



Leo \$38.25 Deluxe \$65.25



Classic \$37.25 Deluxe \$60.50



Vet Deluxe \$59.75



25th Anniversary \$78.00



Vet Loop Small \$99 Med \$103 Large \$107

NANRIC Hoof Tester

Designed by the late Jay Sharp, world renowned blacksmith and toolmaker. Total length - 18". Handles are 13" long with a maximum jaw opening of 6" and a 3/4" jaw opening when closed. Total weight - 1.25 lb. Made of 410 (surgical) stainless steel for exceptional wear and corrosion resistance. Lightweight design and offset jaws offer excellent flexibility, greatly enhancing the user's ability to detect the slightest tissue movement which helps pinpoint areas of inflammation that may be missed with more rigid testers.



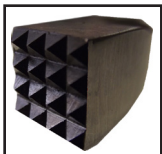
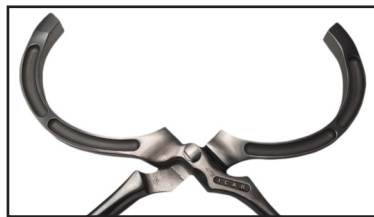
NANRIC Hoof Tester \$255



ICAR Hoof Tester

ICAR Hoof Testers are made of the highest quality Italian tool steel in Italy. The innovative design of the hardened jaws reduces its weight and adds better balance to the tool.

Warrantied to be free from defects in material or workmanship. Available in two sizes: Small 16" and Large 19".



Jaw Face

ICAR Hoof Tester

Small	16"	\$235.25
Large	19"	\$235.25

ICAR Nail Cutter

The ICAR Nail Cutter is a revolution in farrier tools! ICAR added many features to enhance the design and performance of the their nail cutter. The Nail Cutter has magnets built into the jaws of the cutter to catch nail clippings. They are also available with a single or dual clinch block built into the head to save time. Made in Italy of high quality tool steel.



ICAR Nail Cutter w/out Magnets	10"L	\$185
ICAR Nail Cutter w/out Magnets	12"L	\$185
ICAR Nail Cutter w/ Magnets	10"L	\$195
ICAR Nail Cutter w/ Magnets	12"L	\$195
ICAR Nail Cutter w/ Magnets & 1 Clinch Block	12"L	\$228.75
ICAR Nail Cutter w/ Magnets & 2 Clinch Blocks	12"L	\$245.60

ICAR Crease Nail Puller



ICAR Crease Nail Puller 12" L \$126.55

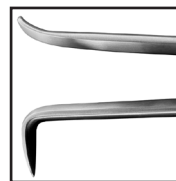
ICAR Dragon Clincher



Draft Clincher	\$209
Low Clincher	\$209
Quarter Clincher	\$209
Race Clincher	\$209

ICAR Pull Off

ICAR Pull Offs are made of the highest quality Italian tool steel in Italy. ICAR has spent a considerable amount of time studying the finer points of Pull Offs and has added many features to enhance their design and performance. The Pull Off removes shoes with a large flat face, removes and cuts nails, and spreads shoes. The 4 function Pull Off also has a hoof cleaner at the tip of the rein as shown below.



ICAR Pull Off 12" OR 14"

3 Function	\$241.75
4 Function	\$254.80

ICAR One-Handed Foal Nipper

The ICAR one-handed foal nipper is a must have for anyone trimming foals and small hooves.

This one-handed, spring loaded, 10" foal nipper is made of high quality Italian Tool Steel. The spring is permanently attached and will not pinch or get in the way of one-handed operation. The pointed handle can be used as a hoof pick. Made in Italy.



ICAR One-Handed Foal Nipper Replacement Spring

10"L	\$289.50
\$17.50	

ICAR Nippers

These nippers are made of the highest quality Italian tool steel in Italy with optimized 1" cutting blades and ergonomic handles. Available in 12", 14" (Regular, Mid-Size, Race Track Head), 15" and 16".



ICAR Race Track Nipper	12"L	\$267.85
ICAR Race Track & Mid-Size Nipper	14"L	\$267.85
ICAR Regular Nipper	14" & 15"L	\$267.85
ICAR Regular Nipper	16"L	\$267.85



ICAR VET 2.0 Knife

The ICAR VET 2.0 Knife measures 8 3/4" long and has a super sharp, high carbon stainless



steel interchangeable blade. The handle is forged aluminum and is ideal for veterinarians as the entire knife can be sterilized in an autoclave. The blades are available in Classic Blade, Drop Blade, Abscess Loop and Loop.



ICAR VET 2.0 Knife	Classic or Drop Blade	\$100.00
ICAR VET 2.0	Abscess Loop Knife (11mm)	\$120.00
ICAR VET 2.0	Loop Knife	\$161.30
Replacement Blades	LH/RH \$54.85 Abscess \$83.10 Loop \$115.20	

ICAR Abscess Loop Knife \$91.75



The ICAR Abscess Loop Knife features a small 11mm super sharp stainless steel loop blade with a rosewood handle. It is perfect for abscesses and delicate work.

ICAR Ergonomic Knife \$59.20

The ICAR Ergonomic Knife has a super sharp Classic or Drop blade made to last. The long, cherry wood, ergonomic handle fits your grip nicely. Available in left or right hand. Made in Italy.



ICAR Classic Knife \$48.30

The ICAR Classic Knife has a super sharp Classic or Drop blade made to last.

The Classic Knife is available in a left or right hand rosewood handle. Made in Italy.



ICAR Loop Knife \$72.20

The ICAR Loop Knife has a long double curved drop blade and a contoured long handle. The loop blade is available in a small 1 1/2" loop or large 2 1/2" loop.



ICAR Pad Shears \$59.20

The 9" ICAR Pad Shears will cut through leather or plastic pads with ease. They cut with precision and are easy to guide. The shears are extremely tough and super sharp. Available with standard red rubber handles.



ICAR Hoof Pick \$32



The ICAR Hoof Pick is ergonomically correct and makes picking feet easy. Made with a Stainless Steel pick and Wengé wood handle. Made to last!

Yoder Deluxe, Cruiser, & Professional Shoeing Box

The Deluxe Shoeing Box is lightweight and compact and has a bottom shelf for extra tools. It weighs 16.2 lbs.

The Cruiser Shoeing Box has a revolutionary tall and compact design. It has a divided center tray to organize nail boxes and clinch blocks. PVC tool holders mounted on each side with an aluminum bottom tool shelf. PVC hammer rack and rasp holders on each side. A magnet on the handle to hold a clinch cutter. The Cruiser weighs only 18 lbs.

The Professional Shoeing Box is a modified version of the Cruiser. It has a 15" wide and 14" deep aluminum shelf with aluminum rasp holders on each side. It has aluminum legs and weighs only 21 lbs. Shown at right.



Deluxe Shoeing Box	33" H x 13.25" W x 13.5" L	\$319
Cruiser Shoeing Box	32" H x 17" W x 18" L	\$347
Professional Shoeing Box	32" H x 17" W x 19" L	\$376



Bassoli Knives *New*

Bassoli Knives are made in Italy. Available in Becca Loop, Becca Vet Loop, Ottavia Loop, Ricky, Zac, Isacco, Tommy, and Dante.



Becca Loop Wood \$36.95



Becca Vet Loop Wood \$34.50



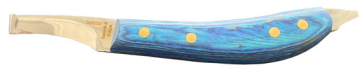
Ottavia Loop \$36.95



Ricky Straight \$34.50



Zac Curved \$34.50



Isacco \$41.75



Becca Loop Aluminium \$59



Becca Vet Loop Alum \$59



Ottavia Alum Loop \$59



Ricky Straight Alum \$59



Zac Curved Alum \$59



Tommy Frog \$47.25

Bassoli Replacement Blades

All Bassoli knives with aluminum handles have replaceable blades. Available for the loops and the left and right hand hoof knives.



Becca Loop \$20.50



Becca Vet Loop \$20.50



Zac L or R \$18.00



Ricky L or R \$18.00

Battlecreek Aprons *New*



Battlecreek Standard and Pro Series Apron Features:

- Cordura fabric top and leg
- Black Leather Leg Patch
- Color stitching
- 1 left side knife pocket and 1 right side knife pockets
- Small size - 27" long x 17" wide (26-33" waist)
- Regular size - 29" long x 17" wide (33-38" waist)

The Pro Series includes 2 right side knife pockets and comes with a back support attachment.

Battlecreek Standard Apron \$185

Battlecreek Pro Series Apron \$205

Battlecreek Elite Apron Features:

- Cordura fabric top and leg
- Black Leather Leg Patch
- Black stitching
- Includes back support attachment with ratchet system straps
- 1 left side knife pocket and 2 right side knife pockets
- Small size - 27" long x 17" wide (26-33" waist)
- Regular size - 29" long x 17" wide (33-38" waist)

Battlecreek Elite Apron \$307.50



***All Battlecreek aprons can be custom ordered in different colors, lengths, and waist sizes. Call 877-462-6742 for pricing and lead times.**

Gibbins Flamemaster Aprons *New*

Available in the Hipster and the Tear-Away style. This durable, light weight apron can be used by farriers and veterinarians. The breathable canvas is waterproof with protective leather patches. The Tear-Away apron fits like a normal apron. The Hipster sits lower on the wearer's hips. Available in Long or Short.

Tear-Away Long \$275.80 Short \$277.90

Hipster Long \$275.80 Short \$259.20





NANRIC Extra Strength Biotin 100™

Dr. Redden formulated this hoof supplement for his personal podiatry cases. Biotin has long been noted as a supplement that aids the natural keratinization process. Hair and horn (hoof capsule) are constantly undergoing growth, maturation and keratinization.



Feeding 1 oz. per day delivers 100 mg. of Biotin and 50mg. of DL Methionine. One gallon lasts 4 months for one mature horse.

We are confident you will see results as Biotin 100™ has become the hoof supplement of choice worldwide. Available in one Gallon Buckets or one Gallon Bags.

Biotin 100™

Qty 1	\$91.00/gallon	Qty 4	\$81.00/gallon
Qty 2	\$86.00/gallon	Qty 8	\$75.00/gallon

Note: The Biotin 100™ Bag can be shipped via a USPS Flat Rate box.

Biotin Bites™ *New* 14 oz. \$16.50/bag

Prices at NANRIC are subject to change without notice.

Surge

Surge has been used as an accessory for the successful treatment of:

- Laminitis
- EPM
- Suspensory ligament injury
- Tendon injury
- Navicular syndrome
- Displaced and simple fractures
- Developmental Orthopedic Disease
- Radiographic lucency of sesamoids
- OCD lesion



Surge is manufactured by Stride Animal Health. It comes in a 1.65 lb container and is approximately a one month supply.

Surge 1.65 lb. \$179.00

NANRIC

133 South Main Street
Lawrenceburg, KY 40342

www.nanric.com

1 - 877 - 462 - 6742